

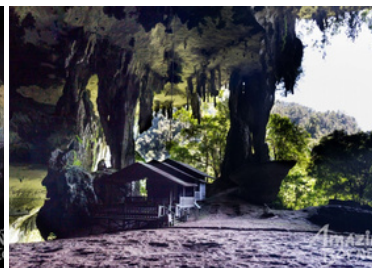
### Day 1 : Arrive in Miri / Miri City Tour (-)

Meet and greet at Miri Airport upon arrival then taking you around the city with the guided tour will making a stop by at the historical and place of interest including the Canada Hills, Petroleum Museum, Grand Old Lady, Old Chinese Temple (WWII surviving building), Local herbs Shop, Kek Lapis Sarawak Shop, Sarawak Handicrafts Shop & Tamu. Later, check in to your hotel and free at your leisure.



### Day 2 : Brunei City Day Tour - ExMiri (B/L)

After a delectable breakfast at your hotel, we will pick you up for a 3-hour drive to Bandar Seri Begawan, the capital of Brunei. You will be seeing some of Brunei's most beautiful and well-known mosques here, including Sultan Omar Ali Saifuddin Mosque and Jame' Asr Hassanil Bolkiah Mosque. Following that, you will also pay a visit to other popular tourist destinations in the country, such as Jerudong Park, the Royal Regalia Museum, the renowned Kampung Ayer, and Nurul Iman Palace. Lunch will be served at a restaurant in town where you will be served with yummy local delicacies. We will transport you back to the hotel for a well-earned rest after a fun-filled day exploring Brunei.



### Day 3 : Niah National Park - Historical Archaeology Cave (B/L)

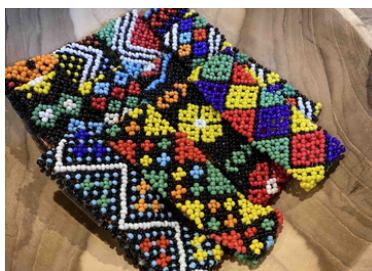
After breakfast, pick up from your hotel and transfer by land for about 1 ½ hours using Miri – Bintulu Coastal Highway. After arriving at the Niah National Park, register at the park counter and visit the Interpretation center. Proceeding to the Pangkalan Lobang Jetty for the boat ride & safety briefing. Visit the Niah Archelogy before starting trekking 3 KM to the Traders Cave. Explore the stories behind the trading post and the traditional old belief of the origin people that live around the area from our local guide. After that, start your journey to the one of the massive cave mouths in the world, The Great Cave. See to believe how the bird nest collector does their job to collect the bird nest with their ancient skills. Returning back to the same plank walk to the Park HQ and transfer for your late lunch. After lunch, proceed back to your hotel.

### Day 4 : Departure or Extend Tour (B)

Free with your own leisure after breakfast until your flight departure to your next destination.

<b>Meals</b>	03 Breakfasts, 02 Lunch
<b>Include</b>	Meals as Stated, Airport Return Transfer, Overland Return Transfer, Tour Return Transfer, Boat Return Transfer, Local English-speaking Guide, Entrance Fees As Per Itinerary
<b>Accommodation</b> (Twin/Triple Share)	03 Nights' Stay At 4-Star Miri Hotel
<b>Exclude</b>	Air Fares, Personal Expenses, Travel Insurance, Optional Tippings, Malaysian Tourism Tax (Pay Direct To Hotel Upon Check-In At RM10/Room/Night and Applicable For Foreigner Only), Any Items / Activities Not Mentioned





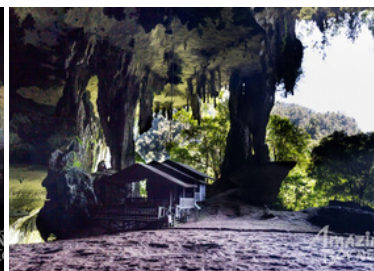
### 第一天：抵达美里 / 游览美里市区 (-)

抵达后在美里机场迎接，然后带您游览城市，并在导游的带领下游览历史名胜，包括老太太 - 加拿大山、石油博物馆、古庙（二战幸存建筑）、当地草药店、Kek Lapis Sarawak 店、Sarawak 手工艺品店和 Tamu 当地菜市场。随后，入住酒店并自由活动。



### 第二天：文莱一日游 - 美里出发 (早餐 + 午餐)

在您的酒店享用美味的早餐后，我们将接您前往文莱首都斯里巴加湾市，车程 3 小时。您将在这里看到文莱一些最美丽和最著名的清真寺，包括苏丹奥马尔·阿里·赛夫丁清真寺和詹姆士·哈桑尼尔·博尔基亚清真寺。随后，您还将参观国内其他热门旅游景点，如水晶公园、皇家御用博物馆、著名的甘榜亚逸和努鲁伊曼皇宫。午餐将在镇上的一家餐厅享用美味的当地美食。在度过了充满乐趣的一天探索文莱后，我们将送您返回酒店，享受应有的休息。



### 第三天：尼亚国家公园 - 历史考古洞穴 (早餐 + 午餐)

早餐后，从您的酒店接您，然后沿着美里 - 民都鲁沿海高速公路陆路转乘约 1 ½ 小时。到达尼亚国家公园后，在公园柜台登记并参观解说中心。前往 Pangkalan Lobang 码头乘船并听取安全简报。参观尼亚考古区，然后开始徒步 3 公里前往商人洞穴。从我们的当地导游那里探索贸易站背后的故事以及居住在该地区周围的原住民的传统古老信仰。之后，开始您的旅程，前往世界上最大的洞口之一——大洞穴。看看燕窝收集者如何用他们古老的技能来收集燕窝。返回同一条栈道，步行前往公园总部，然后转车去享用较晚的午餐。午餐后，返回酒店。

### 第四天：从酒店出发前往美里机场 (早餐)

早餐后，办理退房手续并前往美里机场搭乘您的航班回到您的下一个目的地。

膳食	03 份早餐，02 份午餐
行程包含	餐饮如所述、机场往返接送、酒店往返接送、旅游景点往返接送、游船往返接送、当地英语导游、行程中的景点门票
酒店住宿 (二人/三人供房)	03 晚入住美里四星级酒店
行程不含	机票、旅游保险、酒精饮料、行程中未列明的事项及旅游期间产生的个人开支、在入住酒店时需附旅游税（每房每晚需缴纳RM10），酒店旺季附加费（如有），导游小费司机，马来西亚政府征收的其他税项（如有）